

ROCKVILLE TOWN CENTER

199 EAST MONTGOMERY AVENUE, ROCKVILLE, MD 20850



PROPERTY HIGHLIGHTS

METRO AREA: Washington DC

COUNTY: Montgomery

Rockville Town Center is located in the heart of downtown Rockville, MD within an easy walk to the Rockville Metro station. Anchored by Regal Cinema, the shopping center offers an eclectic mix of fast casual restaurants that serve the nearby office and municipal workers as well as residential towers and hotels. Rockville Town Center features second floor office suites, offering a built-in customer base for the street level retail.

TOTAL SF
98,331

ACRES
1.5

PARKING SPACES
365

PARKING RATIO
3.71:1,000 SF


CENTER TYPE
Community Center

DEMOGRAPHICS 3-MILE RADIUS

 **112,078**
POPULATION

 **42.6**
MEDIAN AGE

 **\$160,499**
AVERAGE HHI

 **68.3%**
COLLEGE
EDUCATED

LEASING AGENTS

JOSHUA BIRNS | jbirns@uedge.com | 212-956-2235

SPECIALTY LEASING

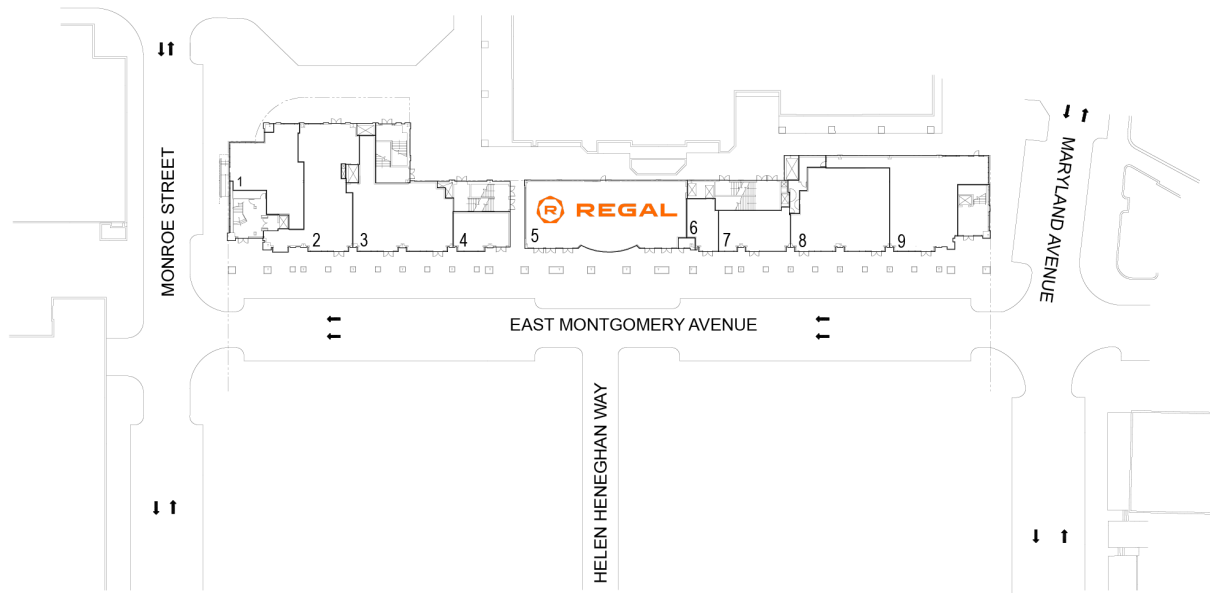
PATRICIA ZAFFERESE | pzafferese@uedge.com | 201-882-7506

ROCKVILLE TOWN CENTER

199 EAST MONTGOMERY AVENUE, ROCKVILLE, MD 20850



FLOOR 01



#	TENANTS	SQFT
1	Dream Land	1,852
2	Giuseppi's Pizza Plus	2,392
3	Potbelly Sandwich Works	2,699
4	Amai Crepe	725
5	Regal Cinemas	3,940
6	Q.L. Barbershop	426
7	Ben & Jerry's	1,000
8	Chef Wang's Kitchen	2,806
9	Hot Pot City	2,815
Storage Available		236

THIS EXHIBIT SHALL NOT BE DEEMED A WARRANTY, REPRESENTATION OR AGREEMENT BY LANDLORD THAT THE LAYOUT OR CONFIGURATION OF THE SHOPPING CENTER, OR ANY PART THEREOF, SHALL REMAIN AS SHOWN HEREON.

LANDLORD RESERVES THE RIGHT TO MODIFY THE SHOPPING CENTER, OR ANY PART THEREOF, IN ACCORDANCE WITH THE PROVISIONS OF THE LEASE.

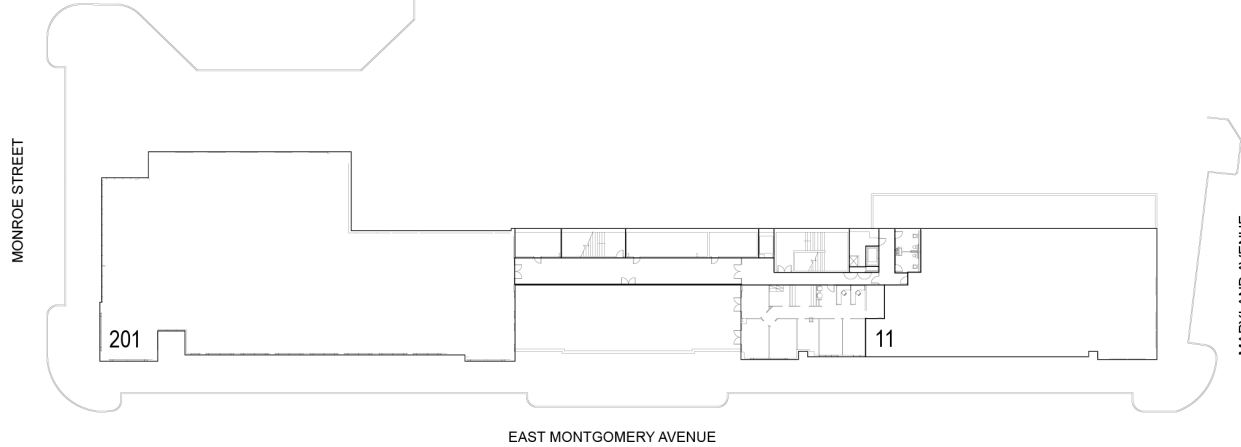
ROCKVILLE TOWN CENTER

199 EAST MONTGOMERY AVENUE, ROCKVILLE, MD 20850



FLOOR 02

#	TENANTS	SQFT
11	Montgomery Cnty MD (Sheriff)	6,554
201	Regus Corporation	14,190



THIS EXHIBIT SHALL NOT BE DEEMED A WARRANTY, REPRESENTATION OR AGREEMENT BY LANDLORD THAT THE LAYOUT OR CONFIGURATION OF THE SHOPPING CENTER, OR ANY PART THEREOF, SHALL REMAIN AS SHOWN HEREON.

LANDLORD RESERVES THE RIGHT TO MODIFY THE SHOPPING CENTER, OR ANY PART THEREOF, IN ACCORDANCE WITH THE PROVISIONS OF THE LEASE.

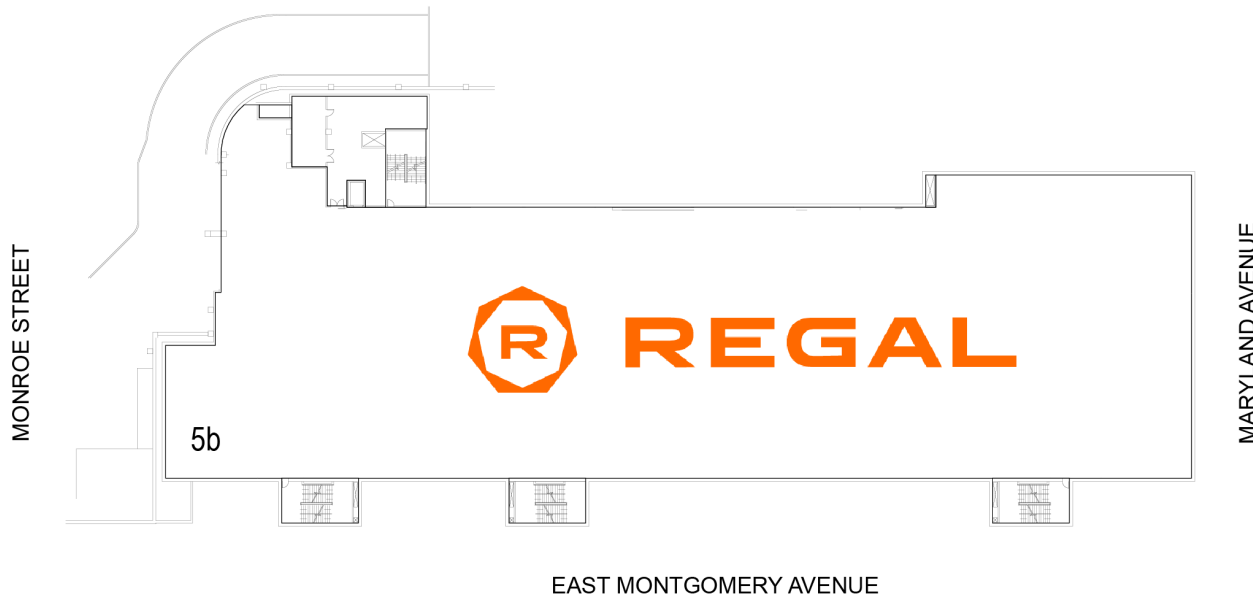
ROCKVILLE TOWN CENTER

199 EAST MONTGOMERY AVENUE, ROCKVILLE, MD 20850



FLOOR -01

#	TENANTS	SQFT
5a	Regal Cinemas	8,112



THIS EXHIBIT SHALL NOT BE DEEMED A WARRANTY, REPRESENTATION OR AGREEMENT BY LANDLORD THAT THE LAYOUT OR CONFIGURATION OF THE SHOPPING CENTER, OR ANY PART THEREOF, SHALL REMAIN AS SHOWN HEREON.

LANDLORD RESERVES THE RIGHT TO MODIFY THE SHOPPING CENTER, OR ANY PART THEREOF, IN ACCORDANCE WITH THE PROVISIONS OF THE LEASE.

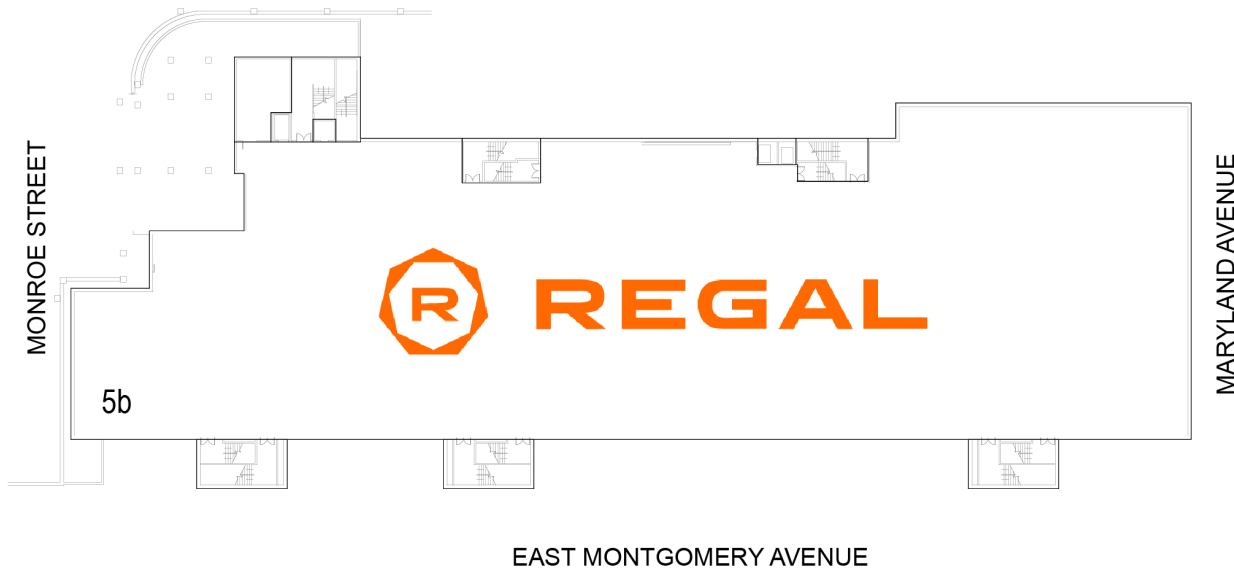
ROCKVILLE TOWN CENTER

199 EAST MONTGOMERY AVENUE, ROCKVILLE, MD 20850



FLOOR -02

#	TENANTS	SQFT
5b	Regal Cinemas	50,584



THIS EXHIBIT SHALL NOT BE DEEMED A WARRANTY, REPRESENTATION OR AGREEMENT BY LANDLORD THAT THE LAYOUT OR CONFIGURATION OF THE SHOPPING CENTER, OR ANY PART THEREOF, SHALL REMAIN AS SHOWN HEREON.

LANDLORD RESERVES THE RIGHT TO MODIFY THE SHOPPING CENTER, OR ANY PART THEREOF, IN ACCORDANCE WITH THE PROVISIONS OF THE LEASE.